



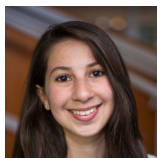
EARLY CAREER

Kazunori Akiyama
(NRAO/MIT Haystack)



EARLY CAREER

Lindy Blackburn
(Center for Astrophysics |
Harvard & Smithsonian)



EARLY CAREER

Katherine L. Bouman
(California Institute of Technology)



**EARLY CAREER
& OUTSTANDING PhD (Analysis)**

Andrew Chael
(Princeton University)
Graduated at Harvard Univ.



OUTSTANDING PhD (Theory)

Jordy Davelaar
(Radboud Universiteit Nijmegen)



EARLY CAREER

Jason Dexter
(University of Colorado Boulder)



EARLY CAREER

Christian M. Fromm
(Goethe-Universität Frankfurt)



EARLY CAREER

Sara Issaoun
(Radboud Universiteit Nijmegen)



EARLY CAREER

Michael Janßen
(Radboud Universiteit Nijmegen)



OUTSTANDING PhD (Instrumentation)

Junhan Kim
(California Institute of Technology)
Graduated at Univ. of Arizona



EARLY CAREER

Dominic Pesce
(Center for Astrophysics |
Harvard & Smithsonian)



EARLY CAREER

Hung-Yi Pu
(Perimeter Institute/
National Taiwan Normal Univ.)



EARLY CAREER

Jan Wagner
(MPI für Radioastronomie)



EARLY CAREER

Maciek Wielgus
(Center for Astrophysics |
Harvard & Smithsonian)



EARLY CAREER

André Young
(Radboud Universiteit Nijmegen)